

Посмотреть товары MARIE JO
в наличии или заказать модели
из новой коллекции можно
в интернет-магазине
ВКРУЖЕВАХ.РФ

--- ПЕРЕЙТИ В МАГАЗИН ---

MARIE JO

FASHION COLLECTION SS22
ROUND 1



MARIE JO

MARIE JO COLLECTION

The fashion collection	5
Styles overview Marie Jo	6

NEW FASHION PIECES

Georgia	8
Agnes	10
Avero	14
Elis	16
Ani	18
Jane	20
Ely	22
Ettie	24

MARIE JO L'AVENTURE COLLECTION

The fashion collection	28
Styles overview Marie Jo L'Aventure	30

NEW FASHION PIECES

Nagae	32
Yoshua	34
Tokuda	36
Tom	38
Taro	40
Mariko	42
Suto	44
Tristan	46
Color Studio Lace	48
Color Studio Basic	49

Labels & Patents	50
------------------	----

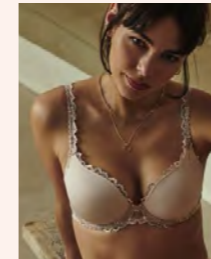
MARIE JO AGNES
PADDED ROUND SHAPE
0102597

Seasonal

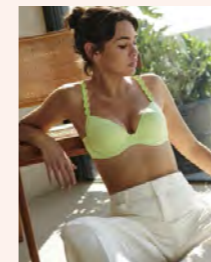
Marie Jo
Fashion collection

EVERYDAY ELEGANCE

- Feminine and refined
- Love for visual lace and embroidery
- Subtle color palettes, yet based on new trends



JANE PPE



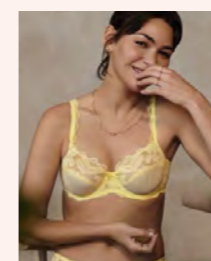
AVERO APS



AGNES NAT



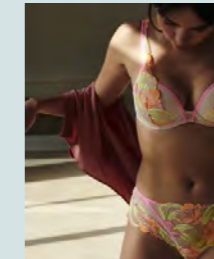
AGNES PBU



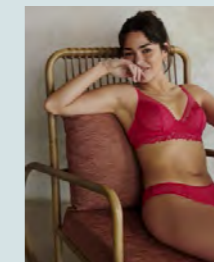
ANI LIA

SUPRISING

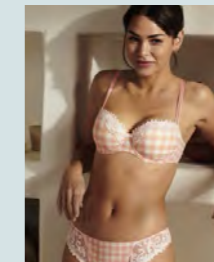
- Bold and eye-catching lingerie
- Original designs
- Love for surprising material combinations
- Trending colors



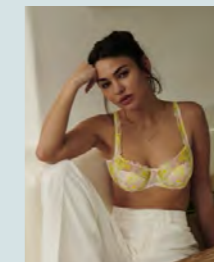
GEORGIA NCR



ELIS SPB



ELY PFT



ETTIE SPS

STYLES OVERVIEW

MARIE JO SS22

		BRAS										BOTTOMS										
		FULL CUP WIRE	DEEP PLUNGE WIRE BRA	SEAMLESS NON PADDED	LONGLINE WIRE BRA	BALCONY HORIZONTAL SEAM	BALCONY VERTICAL SEAM	TRIANGLE BRA	BALCONY PADDED WITH SEAM	HEART SHAPE	ROUND SHAPE	MAXI PUSH-UP	PUSH-UP COOKIES	PADDED BALCONY	RIO BRIEFS	FULL BRIEFS	HOTPANTS	SHORT	ITALIAN BRIEFS	THONG	LUXURY THONG	LOW WAIST BRIEFS
SURPRISING	GEORGIA																					
EVERYDAY ELEGANCE	AGNES																					
EVERYDAY ELEGANCE	AVERO																					
SURPRISING	ELIS																					
EVERYDAY ELEGANCE	ANI																					
EVERYDAY ELEGANCE	JANE																					
SURPRISING	ELY																					
SURPRISING	ETTIE																					

- PADDED CUPS
- WIRELESS
- HALTER NECK
- PROTHESIS POCKET SERVICE
- REMOVABLE STRAPS



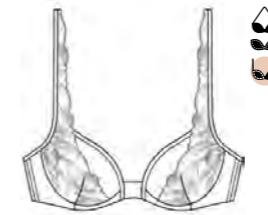
GEORGIA



NCR



0102600
deep plunge wire bra
 EUR: B-E 70-90
 FR: B-E 85-105
 UK: B-E 32-40



0102606
padded bra - heart shape
 EUR: A 70-85 / B-D 70-90 / E 70-85
 FR: A 85-100 / B-D 85-105 / E 85-100
 UK: A 32-38 / B-D 32-40 / E 32-38



0102607
push-up removable pads
 EUR: A-B 70-85 / C-D 65-85 / E 65-80
 FR: A-B 85-100 / C-D 80-100 / E 80-95
 UK: A-B 32-38 / C-D 30-38 / E 30-36



0102609
padded bra - balcony
 EUR: B-E 70-85 / F 70-80
 FR: B-E 85-100 / F 85-95
 UK: B-E 32-38 / F 32-36



0502600
rio briefs
 EUR: 36-46
 FR: 36-46
 UK: XS-2XL



0502602
hotpants
 EUR: 36-44
 FR: 36-44
 UK: XS-XL



0602600
thong
 EUR: 36-44
 FR: 36-44
 UK: XS-XL



DELIVERY DATE

NOTES

.....

.....

.....

PADDED HEART SHAPE
 0102606



TRIANGEL BRA
0102594



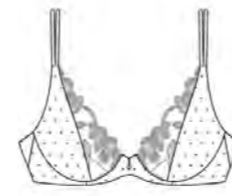
PADDED BALCONY
0102599



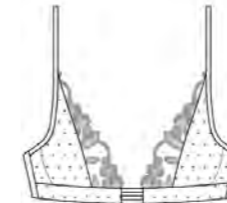
AGNES



Natural - NAT Pale Blue - PBU



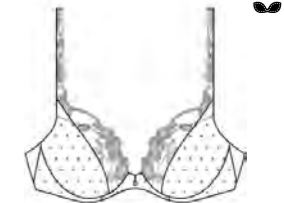
0102590
deep plunge wire bra
 EUR: B-E 70-90
 FR: B-E 85-105
 UK: B-E 32-40



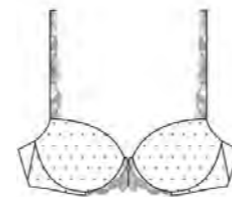
0102594
triangle bra
 EUR: XS-L
 FR: XS-L
 UK: XS-L



0102596
padded bra - heart shape
 EUR: A 70-85 / B-D 70-90 / E 70-85 / F 65-80
 FR: A 85-100 / B-D 85-105 / E 85-100 / F 80-95
 UK: A 32-38 / B-D 32-40 / E 32-38 / F 30-36



0102597
padded bra - round shape
 EUR: A 70-85 / B 70-90 / C-D 65-90 / E 65-85 / F 65-80
 FR: A 85-100 / B 85-105 / C-D 80-105 / E 80-100 / F 80-95
 UK: A 32-38 / B 32-40 / C-D 30-40 / E 30-38 / F 30-36



0102599
padded bra - balcony
 EUR: B-E 70-85
 FR: B-E 85-100
 UK: B-E 32-38



0502590
rio briefs
 EUR: 36-46
 FR: 36-46
 UK: XS-2XL



0502591
full briefs
 EUR: 38-46
 FR: 38-46
 UK: S-2XL



0502594
Italian briefs
 EUR: 36-44
 FR: 36-44
 UK: XS-XL



0602590
thong
 EUR: 36-44
 FR: 36-44
 UK: XS-XL



DELIVERY DATE

NOTES

.....

.....

.....





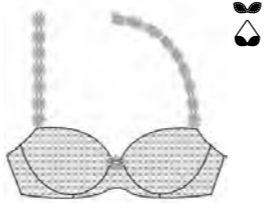






DEEP PLUNGE WIRE
 0102590



PADDED ROUND SHAPE
0100418



AVERO

 <p>0100410 seamless non padded bra EUR: B-C 75-90 / D-E 70-90 FR: B-C 90-105 / D-E 85-105 UK: B-C 34-40 / D-E 32-40</p>	 <p>0100416 padded bra - heart shape EUR: A 70-85 / B 70-90 / C-D 65-90 / E 65-80 FR: A 85-100 / B 85-105 / C-D 80-105 / E 80-95 UK: A 32-38 / B 32-40 / C-D 30-40 / E 30-36</p>	 <p>0100418 padded bra - round shape EUR: B-E 70-85 / F 70-80 FR: B-E 85-100 / F 85-95 UK: B-E 32-38 / F 32-36</p>	 <p>0200417 push-up EUR: A 70-80 / B-C 70-85 / D 65-80 FR: A 85-95 / B-C 85-100 / D 80-95 UK: A 32-36 / B-C 32-38 / D 30-36</p>
 <p>0100419 padded bra - balcony EUR: B-E 70-85 / F 70-80 FR: B-E 85-100 / F 85-95 UK: B-E 32-38 / F 32-36</p>	 <p>0500410 rio briefs EUR: 36-44 FR: 36-44 UK: XS-XL</p>	 <p>0500411 full briefs EUR: 38-46 FR: 38-46 UK: S-2XL</p>	 <p>0500412 low waist briefs EUR: 36-44 FR: 36-44 UK: XS-XL</p>
 <p>0500415 hotpants EUR: 36-44 FR: 36-44 UK: XS-XL</p>	 <p>0500416 shorts EUR: 36-44 FR: 36-44 UK: XS-XL</p>	 <p>0600410 thong EUR: 36-44 FR: 36-44 UK: XS-XL</p>	

DELIVERY DATE

NOTES

.....

.....

.....



LOGLINE WIRE
0102500



Spicy Berry - SPB

ELIS



0102500
longline wire bra
EUR: B-C 70-85 / D-E 65-85 / F 65-80
FR: B-C 85-100 / D-E 80-100 / F 80-95
UK: B-C 32-38 / D-E 30-38 / F 30-36



0102506
padded bra - heart shape
EUR: A-E 70-85 / F 65-80
FR: A-E 85-100 / F 80-95
UK: A-E 32-38 / F 30-36



0102507
push-up
EUR: A 70-80 / B-C 70-85 / D 70-80
FR: A 85-95 / B-C 85-100 / D 85-95
UK: A 32-36 / B-C 32-38 / D 32-36



0102509
padded bra - balcony
EUR: B 70-90 / C-D 65-90 / E 65-85 / F 65-80
FR: B 85-105 / C-D 80-105 / E 80-100 / F 80-95
UK: B 32-40 / C-D 30-40 / E 30-38 / F 30-36



0502500
rio briefs
EUR: 36-46
FR: 36-46
UK: XS-2XL



0502501
full briefs
EUR: 36-46
FR: 36-46
UK: XS-2XL



0502503
shorts
EUR: 36-44
FR: 36-44
UK: XS-XL



0602500
thong
EUR: 36-44
FR: 36-44
UK: XS-XL



DELIVERY DATE

NOTES

.....
.....
.....



FULL CUP WIRE
0102610



Limonada - LIA



0102610
full cup wire bra
EUR: B-D 70-90 / E 70-85
FR: B-D 85-105 / E 85-100
UK: B-D 32-40 / E 32-38



0102613
balcony vertical seam
EUR: B-D 70-90 / E 70-85 / F 70-80
FR: B-D 85-105 / E 85-100 / F 85-95
UK: B-D 32-40 / E 32-38 / F 32-36



0102617
push-up
EUR: A 70-80 / B-C 70-85 / D 65-80
FR: A 85-95 / B-C 85-100 / D 80-95
UK: A 32-36 / B-C 32-38 / D 30-36



0102619
padded bra - balcony
EUR: B-E 70-85 / F 70-80
FR: B-E 85-100 / F 85-95
UK: B-E 32-38 / F 32-36



0502610
rio briefs
EUR: 36-46
FR: 36-46
UK: XS-2XL



0502611
full briefs
EUR: 38-46
FR: 38-46
UK: S-2XL



0502612
hotpants
EUR: 36-44
FR: 36-44
UK: XS-XL



0602610
thong
EUR: 36-44
FR: 36-44
UK: XS-XL



DELIVERY DATE

NOTES

.....

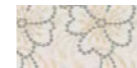
.....

.....



PADDED HEART SHAPE
0101336

ALWAYS AVAILABLE IN



Pale Peach - PPE

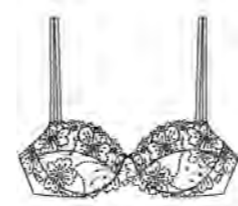


Black - ZWA

Natural - NAT

Dune - AMB

JANE



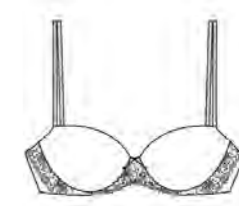
0101332
balcony horizontal seam
EUR: B-E 70-85
FR: B-E 85-100
UK: B-E 32-38



0101336
padded bra - heart shape
EUR: A 70-85 / B-D 70-90 / E 70-85
FR: A 85-100 / B-D 85-105 / E 85-100
UK: A 32-38 / B-D 32-40 / E 32-38



0101337
push-up removable pads
EUR: A-B 70-85 / C-D 65-85 / E 65-80
FR: A-B 85-100 / C-D 80-100 / E 80-95
UK: A-B 32-38 / C-D 30-38 / E 30-36



0101339
padded bra - balcony
EUR: B 70-85 / C-E 65-85 / F 70-80
FR: B 85-100 / C-E 80-100 / F 85-95
UK: B 32-38 / C-E 30-38 / F 32-36



0101335
balcony padded with seam
EUR: A-D 70-85 / E 70-80
FR: A-D 85-100 / E 85-95
UK: A-D 32-38 / E 32-36



0501330
rio briefs
EUR: 36-46
FR: 36-46
UK: XS-2XL



0501333
Italian briefs
EUR: 36-44
FR: 36-44
UK: XS-XL



0501336
full briefs
EUR: 38-46
FR: 38-46
UK: S-2XL



0601330
thong
EUR: 36-44
FR: 36-44
UK: XS-XL



0601331
luxury thong
EUR: 36-44
FR: 36-44
UK: XS-XL



DELIVERY DATE

NOTES

.....
.....
.....



PADDED BALCONY
0102439

ELY



Parfait - PFT



0102432
balcony horizontal seam
EUR: B-E 70-85
FR: B-E 85-100
UK: B-E 32-38



0102433
balcony vertical seam
EUR: B-C 70-85 / D-E 65-85 / F 65-80
FR: B-C 85-100 / D-E 80-100 / F 80-95
UK: B-C 32-38 / D-E 30-38 / F 30-36



0102436
padded bra - heart shape
EUR: A 70-85 / B-C 70-90 / D 65-90 / E 65-85
FR: A 85-100 / B-C 85-105 / D 80-105 / E 80-100
UK: A 32-38 / B-C 32-40 / D 30-40 / E 30-38



0102439
padded bra - balcony
EUR: B-D 70-90 / E 70-85
FR: B-D 85-105 / E 85-100
UK: B-D 32-40 / E 32-38



0502430
rio briefs
EUR: 36-46
FR: 36-46
UK: XS-2XL



0502433
shorts
EUR: 36-44
FR: 36-44
UK: XS-XL



0602430
thong
EUR: 36-44
FR: 36-44
UK: XS-XL



DELIVERY DATE

NOTES

.....

.....

.....



ETTIE



Summer Pastels - SPS



0102580
full cup wire bra
EUR: B-E 70-90
FR: B-E 85-105
UK: B-E 32-40



0102585
balcony padded with seam
EUR: A-D 70-85 / E 70-80
FR: A-D 85-100 / E 85-95
UK: A-D 32-38 / E 32-36



0102586
padded bra - heart shape
EUR: A 70-85 / B-D 70-90 / E 70-85
FR: A 85-100 / B-D 85-105 / E 85-100
UK: A 32-38 / B-D 32-40 / E 32-38



0102589
padded bra - balcony
EUR: B-E 70-85 / F 70-80
FR: B-E 85-100 / F 85-95
UK: B-E 32-38 / F 32-36



0502580
rio briefs
EUR: 36-46
FR: 36-46
UK: XS-2XL



0502583
shorts
EUR: 36-46
FR: 36-46
UK: XS-2XL



0602580
thong
EUR: 36-44
FR: 36-44
UK: XS-XL



PADDED BALCONY WITH SEAM
0102585

DELIVERY DATE

NOTES

.....

.....

.....



Seasonal

Marie Jo L'Aventure
Fashion collection

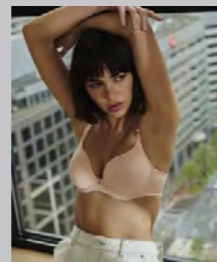
MARIE JO L'AVENTURE NAGAE
TRIANGEL BRA
0122194

The fashion collection

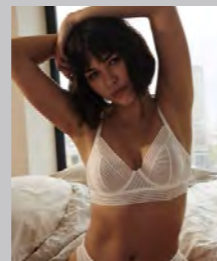
Marie Jo L'Aventure SS22

URBAN CHIC

- A minimalist look that enhances a no-nonsense yet feminine style that is both cool and sporty.



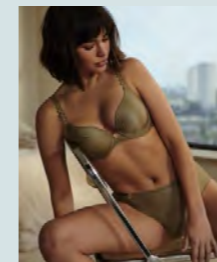
YOSHUA SKT



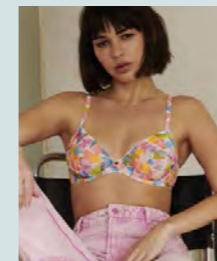
TOKUDA NAT

ON TREND

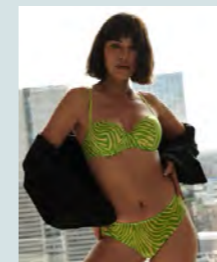
- Based on the latest trends, the trend segment brings lingerie in vibrant colors & patterns to bring out a feel good mood.



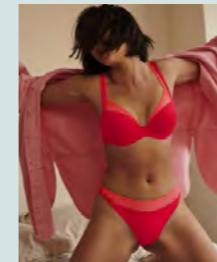
TOM GOO



TARO BLO



TRISTAN VBA



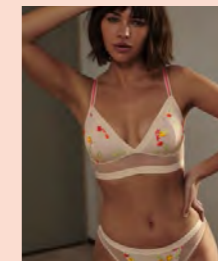
MARIKO FPU

PLAYFUL

- Light lingerie to feel bold yet feminine, giving you that extra cool & sexy vibe.



SUTO ZWA



NAGAE GEI

STYLES OVERVIEW

MARIE JO L'AVENTURE SS22

		BRAS									BOTTOMS								
		FULL CUP WIRE BRA	WIRE BRA	DEEP PLUNGE WIRE BRA	ROUND SHAPE	BALCONY VERTICAL SEAM	LONGLINE WIRE BRA	TRIANGEL BRA	HEART SHAPE	DEEP PLUNGE PADDED	PUSH-UP	PADDED BALCONY	RIO BRIEFS	FULL BRIEFS	HOTPANTS	SHORT	SHAPE-WEAR HIGH BRIEFS	THONG	BODY
PLAYFUL	NAGAE																		
URBAN CHIC	YOSHUA																		
URBAN CHIC	TOKUDA																		
ON TREND	TOM																		
ON TREND	TARO																		
ON TREND	MARIKO																		
PLAYFUL	SUTO																		
ON TREND	TRISTAN																		
	COLOR STUDIO LACE																		
	COLOR STUDIO BASIC																		



PADDED BALCONY
0122199

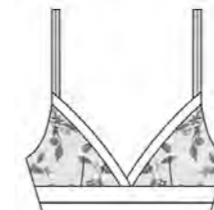
NAGAE



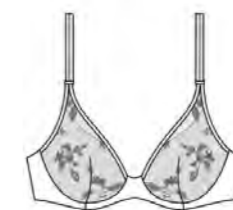
Geisha - GEI



0122193
balcony vertical seam
EUR: B-D 70-90 / E 70-85 / F 70-80
FR: B-D 85-105 / E 85-100 / F 85-95
UK: B-D 32-40 / E 32-38 / F 32-36



0122194
triangle bra
EUR: A-C 70-85 / D 70-80
FR: A-C 85-100 / D 85-95
UK: A-C 32-38 / D 32-36



0122196
padded bra - heart shape
EUR: A 70-85 / B-D 70-90 / E 70-85
FR: A 85-100 / B-D 85-105 / E 85-100
UK: A 32-38 / B-D 32-40 / E 32-38



0122199
padded bra - balcony
EUR: B 70-85 / C-E 65-85 / F 65-80
FR: B 85-100 / C-E 80-100 / F 80-95
UK: B 32-38 / C-E 30-38 / F 30-36



0522190
rio brief
EUR: 36-46
FR: 36-46
UK: XS-2XL



0522192
hotpants
EUR: 36-44
FR: 36-44
UK: XS-XL



0622190
thong
EUR: 36-44
FR: 36-44
UK: XS-XL



DELIVERY DATE

NOTES

.....
.....
.....



YOSHUA



Silky Tan - SKT



0122210
full cup wire bra
EUR: B-E 70-90 / F 70-85
FR: B-E 85-105 / F 85-100
UK: B-E 32-40 / F 32-38



0122216
padded bra - heart shape
EUR: A 70-85 / B-D 70-90 / E 70-85
FR: A 85-100 / B-D 85-105 / E 85-100
UK: A 32-38 / B-D 32-40 / E 32-38



0122219
padded bra - balcony
EUR: B 70-90 / C-D 65-90 / E 65-85 / F 65-80
FR: B 85-105 / C-D 80-105 / E 80-100 / F 80-95
UK: B 32-40 / C-D 30-40 / E 30-38 / F 30-36



0522210
rio brief
EUR: 36-46
FR: 36-46
UK: XS-2XL



0522213
shorts
EUR: 36-46
FR: 36-46
UK: XS-2XL



0622210
thong
EUR: 36-44
FR: 36-44
UK: XS-XL



DELIVERY DATE

NOTES

.....
.....
.....

PADDED HEART SHAPE
0122216

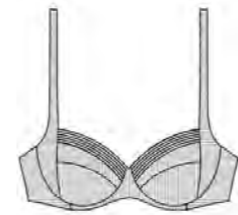


LONGLINE WIRE BRA
0122164

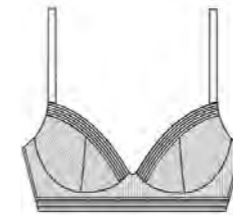
TOKUDA



Natural - NAT



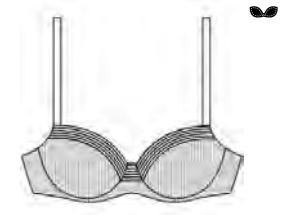
0122160
full cup wire bra
EUR: B-D 70-90 / E-F 70-85
FR: B-D 85-105 / E-F 85-100
UK: B-D 32-40 / E-F 32-38



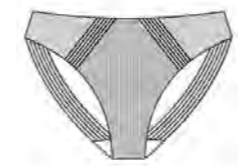
0122164
longline wire bra
EUR: B-D 70-90 / E 70-85
FR: B-D 85-105 / E 85-100
UK: B-D 32-40 / E 32-38



0122166
padded bra - heart shape
EUR: A 70-85 / B-D 70-90 / E 70-85
FR: A 85-100 / B-D 85-105 / E 85-100
UK: A 32-38 / B-D 32-40 / E 32-38



0122169
padded bra - balcony
EUR: B 70-85 / C-E 65-85 / F 65-80
FR: B 85-100 / C-E 80-100 / F 80-95
UK: B 32-38 / C-E 30-38 / F 30-36



0522160
rio brief
EUR: 36-46
FR: 36-46
UK: XS-2XL



0522161
full briefs
EUR: 38-46
FR: 38-46
UK: S-2XL



0522162
hotpants
EUR: 36-44
FR: 36-44
UK: XS-XL



0622160
thong
EUR: 36-44
FR: 36-44
UK: XS-XL



DELIVERY DATE

NOTES

.....
.....
.....



Golden Olive - GOO

ALWAYS AVAILABLE IN



Charcoal - CHB White - WT Natural - NAT Caffé Latte - CAL Scarlet - SCA

TOM



0120821
full cup wire bra
EUR: D-E 70-90 / F 70-85
FR: D-E 85-105 / F 85-100
UK: D-E 32-40 / F 32-38



0120822
padded bra - round shape
EUR: B-D 70-90 / E 70-85
FR: B-D 85-105 / E 85-100
UK: B-D 32-40 / E 32-38



0120826
padded bra - heart shape
EUR: A 70-85 / B-C 70-90 / D 70-85 / E 70-80
FR: A 85-100 / B-C 85-105 / D 85-100 / E 85-95
UK: A 32-38 / B-C 32-40 / D 32-38 / E 32-36



0120829
padded bra - balcony
EUR: B 70-85 / C-E 65-85 / F 65-80
FR: B 85-100 / C-E 80-100 / F 80-95
UK: B 32-38 / C-E 30-38 / F 30-36



0220827
push-up
EUR: A 70-80 / B-C 70-85 / D 65-80
FR: A 85-95 / B-C 85-100 / D 80-95
UK: A 32-36 / B-C 32-38 / D 30-36



0520820
rio briefs
EUR: 36-46
FR: 36-46
UK: XS-2XL



0520822
hotpants
EUR: 36-44
FR: 36-44
UK: XS-XL



0520823
shorts
EUR: 36-46
FR: 36-46
UK: XS-2XL



0620820
thong
EUR: 36-44
FR: 36-44
UK: XS-XL



DELIVERY DATE

NOTES

.....
.....
.....

PADDED HEART SHAPE
0120826



Bloom - BLO



0122220
wire bra
EUR: A-D 70-85 / E 70-80
FR: A-D 85-100 / E 85-95
UK: A-D 32-38 / E 32-36



0122226
padded bra - heart shape
EUR: A 70-85 / B-D 70-90 / E 70-85
FR: A 85-100 / B-D 85-105 / E 85-100
UK: A 32-38 / B-D 32-40 / E 32-38



0122229
padded bra - balcony
EUR: B 70-85 / C-E 65-85
FR: B 85-100 / C-E 80-100
UK: B 32-38 / C-E 30-38



0522220
rio brief
EUR: 36-46
FR: 36-46
UK: XS-2XL



0522222
shorts
EUR: 36-44
FR: 36-44
UK: XS-XL



0622220
thong
EUR: 36-44
FR: 36-44
UK: XS-XL



DELIVERY DATE

NOTES

.....
.....
.....



Fruit Punch - FPU



0122170
deep plunge wire bra
 EUR: B-D 70-85 / E 70-80
 FR: B-D 85-100 / E 85-95
 UK: B-D 32-38 / E 32-36



0122176
padded bra - deep plunge
 EUR: A 70-85 / B-D 70-90 / E 70-85
 FR: A 85-100 / B-D 85-105 / E 85-100
 UK: A 32-38 / B-D 32-40 / E 32-38



0122179
padded bra - balcony
 EUR: B 70-85 / C-E 65-85
 FR: B 85-100 / C-E 80-100
 UK: B 32-38 / C-E 30-38



0522170
rio brief
 EUR: 36-44
 FR: 36-44
 UK: XS-XL



0522173
shorts
 EUR: 36-46
 FR: 36-46
 UK: XS-2XL



0622170
thong
 EUR: 36-44
 FR: 36-44
 UK: XS-XL



DELIVERY DATE

NOTES

.....

.....

.....

PADDED BALCONY
 0122179



LONGLINE WIRE
0122180

SUTO



Black - ZWA



0122180
longline wire bra
EUR: A 70-85 / B-D 70-90 / E 70-85
FR: A 85-100 / B-D 85-105 / E 85-100
UK: A 32-38 / B-D 32-40 / E 32-38



0122186
padded bra - heart shape
EUR: A 70-85 / B-D 70-90 / E 70-85
FR: A 85-100 / B-D 85-105 / E 85-100
UK: A 32-38 / B-D 32-40 / E 32-38



0122187
push-up
EUR: A 70-80 / B-C 70-85 / D 65-80
FR: A 85-95 / B-C 85-100 / D 80-95
UK: A 32-36 / B-C 32-38 / D 30-36



0522180
rio brief
EUR: 36-46
FR: 36-46
UK: XS-2XL



0522182
hotpants
EUR: 36-44
FR: 36-44
UK: XS-XL



0622180
thong
EUR: 36-44
FR: 36-44
UK: XS-XL



0422184
body
EUR: XS-L
FR: XS-L
UK: XS-L



DELIVERY DATE

NOTES

.....
.....
.....

TRISTAN



Vert Bambou - VBA



0122150
wire bra
EUR: A-D 70-85 / E 70-80
FR: A-D 85-100 / E 85-95
UK: A-D 32-38 / E 32-36



0122156
padded bra - heart shape
EUR: A 70-85 / B-D 70-90 / E 70-85
FR: A 85-100 / B-D 85-105 / E 85-100
UK: A 32-38 / B-D 32-40 / E 32-38



0122159
padded bra - balcony
EUR: B 70-85 / C-E 65-85 / F 65-80
FR: B 85-100 / C-E 80-100 / F 80-95
UK: B 32-38 / C-E 30-38 / F 30-36



0522150
rio brief
EUR: 36-46
FR: 36-46
UK: XS-2XL



0522152
hotpants
EUR: 36-44
FR: 36-44
UK: XS-XL



0622150
thong
EUR: 36-44
FR: 36-44
UK: XS-XL



DELIVERY DATE

NOTES

.....

.....

.....

PADDED BALCONY
0122159

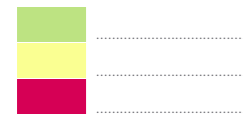


Apple Sorbet - APS Starlight - STL Blogger Pink - BGP

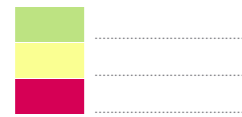
COLOR STUDIO LACE



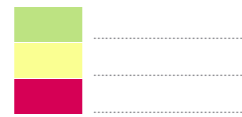
0521630
rio briefs
EUR: 36-46
FR: 36-46
UK: XS-2XL



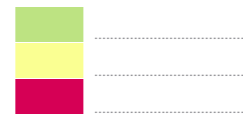
0521631
shapewear high briefs
EUR: 36-46
FR: 36-46
UK: XS-2XL



0521633
shorts
EUR: 36-44
FR: 36-44
UK: XS-XL



0621630
thong
EUR: 36-44
FR: 36-44
UK: XS-XL

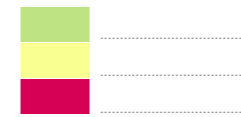


Apple Sorbet - APS Starlight - STL Blogger Pink - BGP

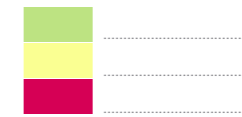
COLOR STUDIO BASIC



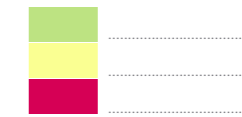
0521510
rio briefs
EUR: 36-46
FR: 36-46
UK: XS-2XL



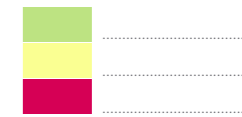
0521511
full briefs
EUR: 40-48
FR: 40-48
UK: M-3XL



0521513
shorts
EUR: 36-46
FR: 36-46
UK: XS-2XL



0621510
thong
EUR: 36-44
FR: 36-44
UK: XS-XL



ALWAYS AVAILABLE IN



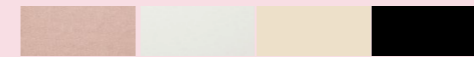
Patine - PNE Natural - NAT Black - ZWA

AS OF JUNE 2021



Pearly Pink - PEP Scarlet - SCA

ALWAYS AVAILABLE IN



Patine - PNE Natural - NAT Caffé Latte - CAL Black - ZWA

AS OF JUNE 2021



Pearly Pink - PEP Scarlet - SCA

DELIVERY DATE

NOTES

.....
.....
.....

DELIVERY DATE

NOTES

.....
.....
.....

LABELS & PATENTS



SA8000

The **SA8000 label** is the worldwide leading certificate for **corporate social responsibility** with strict criteria in terms of child labor, forced labor, health and safety, freedom of association, discrimination, disciplinary procedures, working hours, salary and management. Van de Velde was one of the first Belgian companies to carry this label.

The same standards are demanded from all our suppliers, so we can guarantee our customers that our lingerie is produced under the best possible conditions for mankind and the environment.



PATENTED WIRES

Underwires covered in a **patented combination of 3 types of materials**, also used in the car industry. This prevents the wires from poking through the material, while ensuring a soft, flexible and comfortable fit.



AWARD-WINNING LINGERIE

The first Marie Jo swimwear collection won the **Mare di Moda** award.

2 years in a row our Marie Jo lingerie collection won the German **Sterne der Wäsche** award.

TESTED ON REAL WOMEN

We test all of our lingerie and swimwear on real women with different bodies and cupsizes. Thanks to their feedback we can constantly improve our fit.

SAFE LINGERIE

The quality of our lingerie is legendary. Colors and elasticity resist frequent washing. All our lingerie, and resources, comply with the Oeko-tex and REACH legislations.



The **Oeko-tex** standard 100 label (class 2) ensures that our products are **free of harmful substances and allergens**.



REACH wants to expand knowledge about chemical substances and their risks. The harmful substances in a product need to be registered and communicated to the employees and to the consumer.



We work with **European suppliers** as much as possible. Our lace finds its origin in [France](#), the embroidery in [Switzerland](#) or [Italy](#). Innovative microfibers come from [Belgium](#). Sourcing close to our cutting facility is better for the environment. In addition, many of our suppliers are doing ecological efforts, such as investing in their own water purification installations.



The paper we use for our brochures and labels is **FSC** certified. This means that the paper comes from responsible sources—environmentally appropriate, socially beneficial and economically viable.



www.mariejo.com





MARIE JO

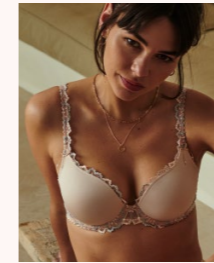
FASHION COLLECTION SS22
ROUND 2

Seasonal

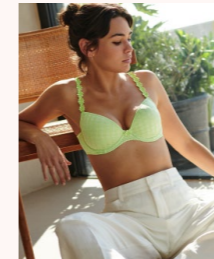
Marie Jo
Fashion collection

EVERYDAY ELEGANCE

- Feminine and refined
- Love for visual lace and embroidery
- Subtle color palettes, yet based on new trends



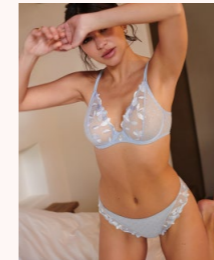
JANE PPE



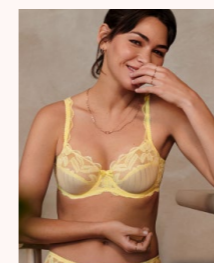
AVERO APS



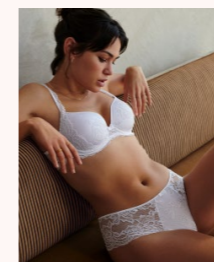
AGNES NAT



AGNES PBU



ANI LIA

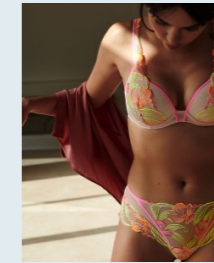


SYLVIA WIT

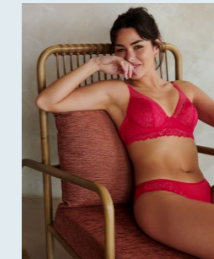
R2

SUPRISING

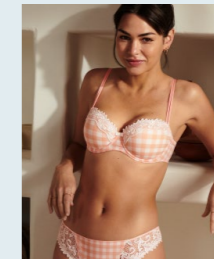
- Bold and eye-catching lingerie
- Original designs
- Love for surprising material combinations
- Trending colors



GEORGIA NCR



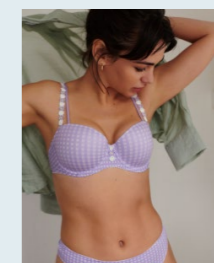
ELIS SPB



ELY PFT



ETTIE SPS



AVERO TIIR

R2

STYLES OVERVIEW

MARIE JO SS22 - ROUND 2

		BRAS						BOTTOMS					
		FULL CUP WIRE	HEART SHAPE	ROUND SHAPE	PUSH-UP	PADDED STRAPLESS	PADDED BALCONY	RIO BRIEFS	FULL BRIEFS	HOTPANTS	SHORT	THONG	LUXURY THONG
SURPRISING	AVERO												
EVERYDAY ELEGANCE	SYLVIA												

	PADDED CUPS		HALTER NECK
	WIRELESS		REMOVABLE STRAPS

SYLVIA



PADDED HEART SHAPE
0102466



PADDED HEART SHAPE
0102466



SYLVIA



White - WIT



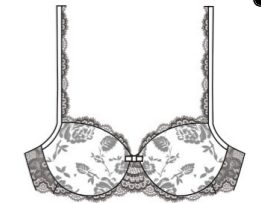
0102460
full cup wire bra
EUR: B-E 70-90
FR: B-E 85-105
UK: B-E 32-40



0102466
padded bra - heart shape
EUR: A 70-85 / B-D 70-90 / E 70-85
FR: A 85-100 / B-D 85-105 / E 85-100
UK: A 32-38 / B-D 32-40 / E 32-38



0102467
push-up
EUR: A-C 70-85 / D 65-80
FR: A-C 85-100 / D 80-95
UK: A-C 32-38 / D 30-36



0102469
padded bra - balcony
EUR: B 70-85 / C-E 65-85 / F 65-80
FR: B 85-100 / C-E 80-100 / F 80-95
UK: B 32-38 / C-E 30-38 / F 30-36



0502460
rio briefs
EUR: 36-46
FR: 36-46
UK: XS-2XL



0502461
full briefs
EUR: 38-46
FR: 38-46
UK: S-2XL



0602460
thong
EUR: 36-44
FR: 36-44
UK: XS-XL



0602461
luxury thong
EUR: 36-44
FR: 36-44
UK: XS-XL



DELIVERY DATE

NOTES

.....
.....
.....

FULL CUP WIRE
0102460



SYLVIA
White

0102467 push-up
0602461 luxury thong



SYLVIA
White

0102469 padded bra balcony
0502461 full briefs

AVERO



PADDED BALCONY
0100419





Tiny Iris - TIR

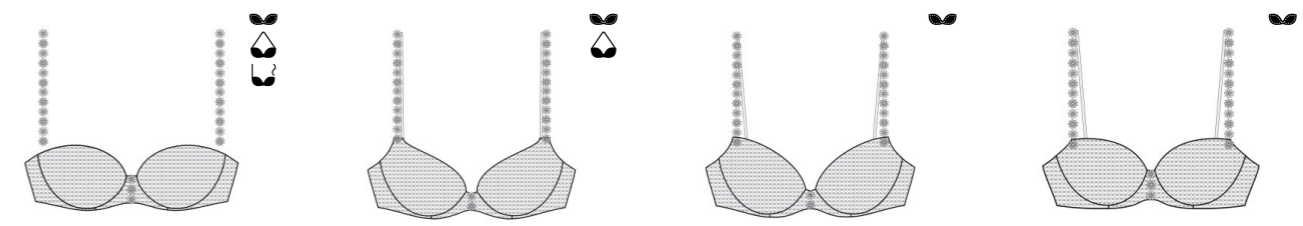
R1

Apple Sorbet - APS

ALWAYS AVAILABLE IN

White - WIT Natural - NAT Caffé Latte - CAL Black - ZWA Pearly Pink - PEP Scarlet - SCA

AVERO

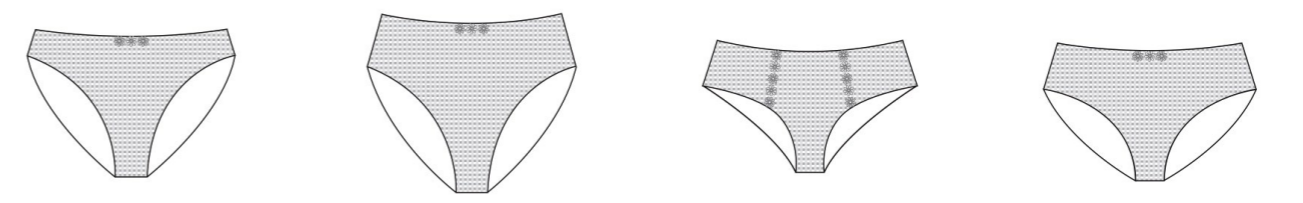


0200413
padded bra - strapless
EUR: B-C 75-85 / D 70-85 / E 70-80
FR: B-C 90-100 / D 85-100 / E 85-95
UK: B-C 34-38 / D 32-38 / E 32-36

0100416
padded bra - heart shape
EUR: A 70-85 / B 70-90 / C-D 65-90 / E 65-80
FR: A 85-100 / B 85-105 / C-D 80-105 / E 80-95
UK: A 32-38 / B 32-40 / C-D 30-40 / E 30-36

0100418
padded bra - round shape
EUR: B-E 70-85 / F 70-80
FR: B-E 85-100 / F 85-95
UK: B-E 32-38 / F 32-36

0100419
padded bra - balcony
EUR: B-C 70-85 / D-E 65-85 / F 70-85
FR: B-C 85-100 / D-E 80-100 / F 85-100
UK: B-C 32-38 / D-E 30-38 / F 32-38

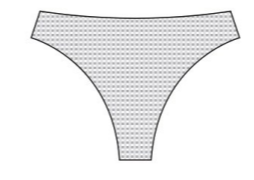


0500410
rio briefs
EUR: 36-46
FR: 36-46
UK: XS-2XL

0500411
full briefs
EUR: 38-46
FR: 38-46
UK: S-2XL

0500415
hotpants
EUR: 36-46
FR: 36-46
UK: XS-2XL

0500416
shorts
EUR: 36-44
FR: 36-44
UK: XS-XL



0600410
thong
EUR: 36-44
FR: 36-44
UK: XS-XL



DELIVERY DATE

NOTES

.....

.....

.....

PADDED BALCONY
0100419



AVERO
Tiny Iris

0100416 padded bra heartshape
0500410 rio briefs



AVERO
Tiny Iris

0100418 padded bra round shape
0500415 hotpants



AVERO
Tiny Iris

0200413 padded bra strapless
0500411 full briefs



Seasonal

Marie Jo L'Aventure
Fashion collection

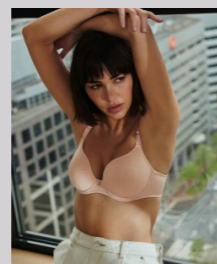
MARIE JO L'AVENTURE TOM
PADDED WIRELESS
0120824

The fashion collection

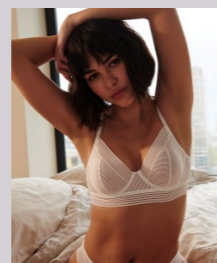
Marie Jo L'Aventure SS22

URBAN CHIC

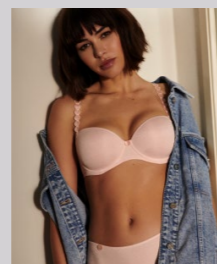
- A minimalist look that enhances a no-nonsense yet feminine style that is both cool and sporty.



YOSHUA SKT



TOKUDA NAT



TOM CRP

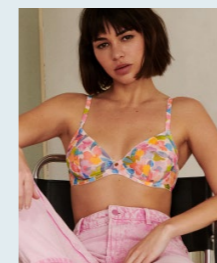
R2

ON TREND

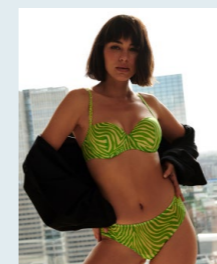
- Based on the latest trends, the trend segment brings lingerie in vibrant colors & patterns to bring out a feel good mood.



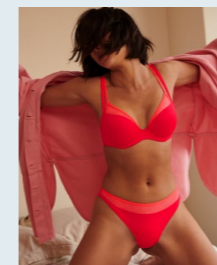
TOM GOO



TARO BLO



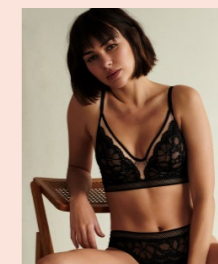
TRISTAN VBA



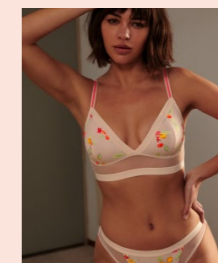
MARIKO FPU

PLAYFUL

- Light lingerie to feel bold yet feminine, giving you that extra cool & sexy vibe.



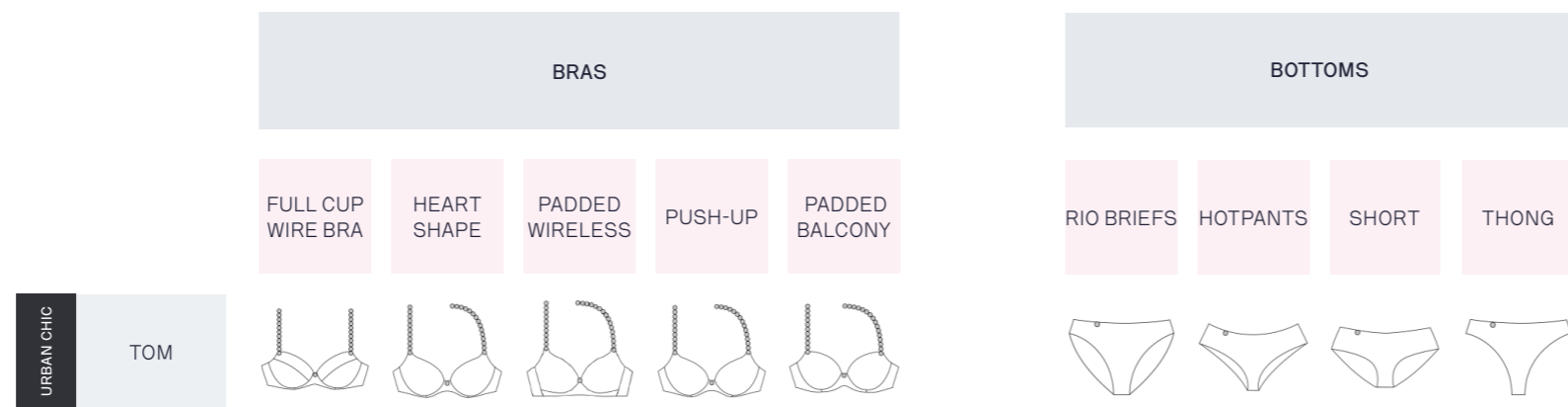
SUTO ZWA



NAGAE GEI

STYLES OVERVIEW

MARIE JO L'AVENTURE SS22 - ROUND 2



TOM



PADDED BALCONY
0120829



PADDED BALCONY
0120829

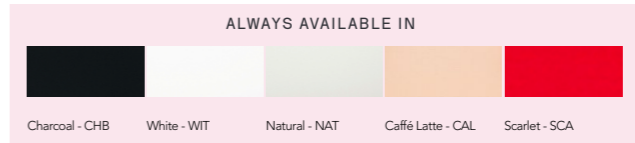




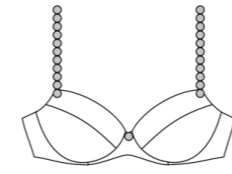
Crystal Pink - CRP



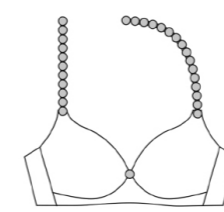
Golden Olive - GOO



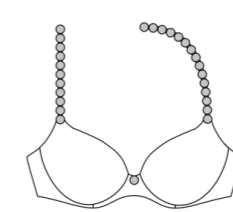
TOM



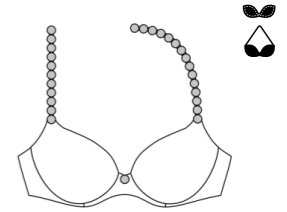
0120821
full cup wire bra
EUR: D-E 70-90 / F 70-85
FR: D-E 85-105 / F 85-100
UK: D-E 32-40 / F 32-38



0120824
padded wireless bra
EUR: A 75-85 / B-C 70-85
FR: A 90-100 / B-C 85-100
UK: A 34-38 / B-C 32-38



0120826
padded bra - heart shape
EUR: A 70-85 / B-C 70-90 / D 70-85 / E 70-80
FR: A 85-100 / B-C 85-105 / D 85-100 / E 85-95
UK: A 32-38 / B-C 32-40 / D 32-38 / E 32-36



0220827
push-up
EUR: A 70-80 / B-C 70-85 / D 70-80
FR: A 85-95 / B-C 85-100 / D 85-95
UK: A 32-36 / B-C 32-38 / D 32-36



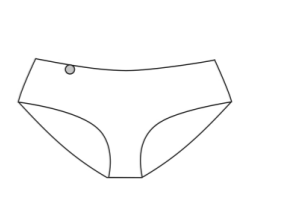
0120829
padded bra - balcony
EUR: B 70-90 / C-D 65-90 / E 65-85 / F 70-80
FR: B 85-105 / C-D 80-105 / E 80-100 / F 85-95
UK: B 32-40 / C-D 30-40 / E 30-38 / F 32-36



0520820
rio briefs
EUR: 36-46
FR: 36-46
UK: XS-2XL



0520822
hotpants
EUR: 36-44
FR: 36-44
UK: XS-XL



0520823
shorts
EUR: 36-46
FR: 36-46
UK: XS-2XL



0620820
thong
EUR: 36-44
FR: 36-44
UK: XS-XL



DELIVERY DATE

NOTES

.....

.....

.....

PADDED WIRELESS
0120824



TOM
Crystal Pink

0120826 padded bra heartshape
0520822 hotpants



TOM
Crystal Pink

0220827 push-up
0620820 thong

LABELS & PATENTS



SA8000

The **SA8000 label** is the worldwide leading certificate for **corporate social responsibility** with strict criteria in terms of child labor, forced labor, health and safety, freedom of association, discrimination, disciplinary procedures, working hours, salary and management. Van de Velde was one of the first Belgian companies to carry this label.

The same standards are demanded from all our suppliers, so we can guarantee our customers that our lingerie is produced under the best possible conditions for mankind and the environment.



PATENTED WIRES

Underwires covered in a **patented combination of 3 types of materials**, also used in the car industry. This prevents the wires from poking through the material, while ensuring a soft, flexible and comfortable fit.



AWARD-WINNING LINGERIE

The first Marie Jo swimwear collection won the **Mare di Moda** award.

2 years in a row our Marie Jo lingerie collection won the German **Sterne der Wäsche** award.

TESTED ON REAL WOMEN

We test all of our lingerie and swimwear on real women with different bodies and cupsizes. Thanks to their feedback we can constantly improve our fit.

SAFE LINGERIE

The quality of our lingerie is legendary. Colors and elasticity resist frequent washing. All our lingerie, and resources, comply with the Oeko-tex and REACH legislations.



The **Oeko-tex standard 100 label (class 2)** ensures that our products are **free of harmful substances and allergens**.



REACH wants to expand knowledge about chemical substances and their risks. The harmful substances in a product need to be registered and communicated to the employees and to the consumer.



We work with **European suppliers** as much as possible. Our lace finds its origin in France, the embroidery in Switzerland or Italy. Innovative microfibers come from Belgium. Sourcing close to our cutting facility is better for the environment. In addition, many of our suppliers are doing ecological efforts, such as investing in their own water purification installations.



The paper we use for our brochures and labels is **FSC** certified. This means that the paper comes from responsible sources—environmentally appropriate, socially beneficial and economically viable.

Посмотреть товары MARIE JO
в наличии или заказать модели
из новой коллекции можно
в интернет-магазине
ВКРУЖЕВАХ.РФ

--- ПЕРЕЙТИ В МАГАЗИН ---



www.mariejo.com

